

# CERTIFICATE OF LOCATION OF GOVERNMENT CORNER

County of Anoka

State of Minnesota

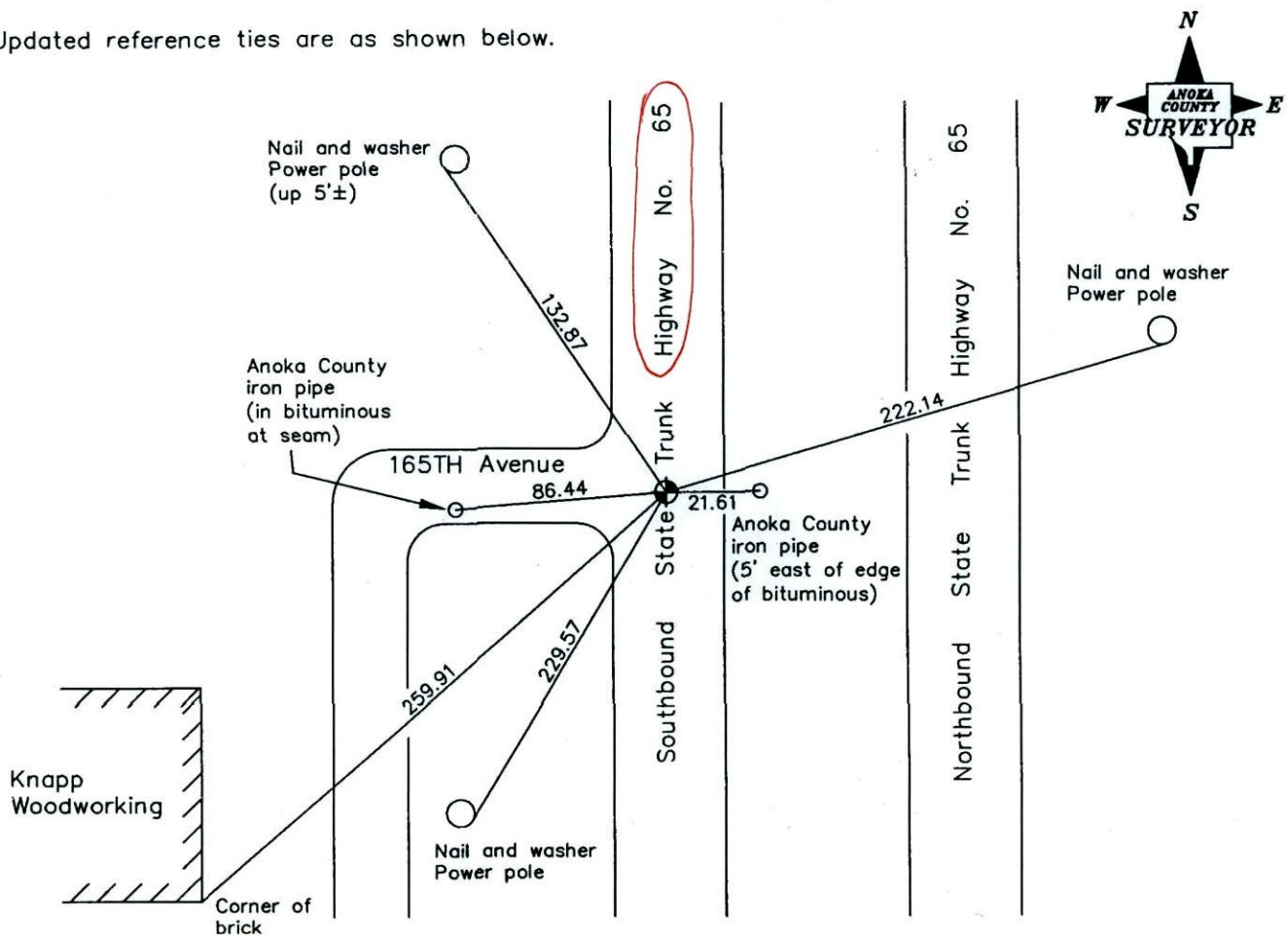
South 1/4 Corner of Sec. 8 Township 32 Range 23

On the 16th day of April, 1963, the described corner was evidenced by a spike in centerline

and to perpetuate the location of said corner, at the exact location thereof, a permanent marker was placed consisting of a cast iron monument

AND on the 18th day of September, 2006, said permanent marker was found

Updated reference ties are as shown below.



Revised date
7/20/81
7/10/87
8/18/98
9/18/06

N.A.D. 1983 Coordinates (1996 Adjustment)	
County Project Coordinates	
Northing	185531.8004
Easting	508142.8432
Date	9/18/06

I hereby certify that this United States public land survey monument record is correct and complete to the best of my knowledge and belief.

*Larry D. Hoium* Date 6/26/07

Larry D. Hoium, Anoka County Surveyor  
Minnesota License Number 18165



# CERTIFICATE OF LOCATION OF GOVERNMENT CORNER

County of Anoka

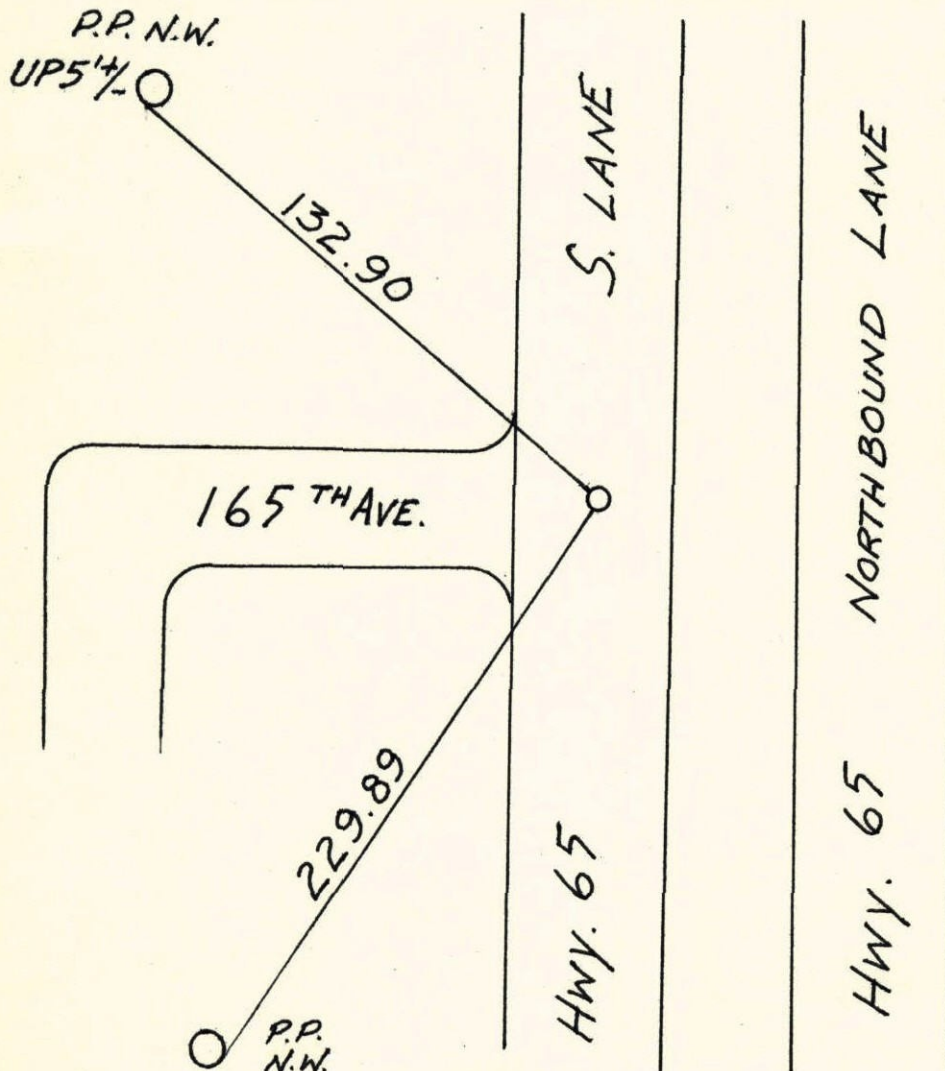
State of Minnesota

SOUTH QTR. Corner of Sec. 8 Township 32 Range 23

I hereby certify that on the 16 day of APRIL, 19  , I found the described corner which was evidenced by SPIKE IN CENTER LINE

and I further certify that to perpetuate the location of said corner, I did, at the exact location thereof, place a permanent marker consisting of CAST IRON MON.

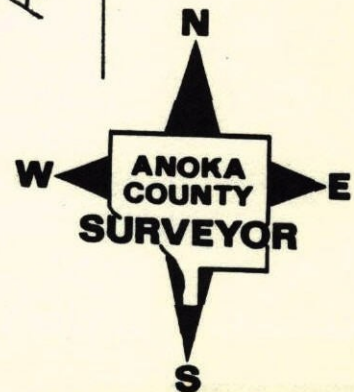
which reference or witness monuments are located in the manner following:



N.A.D.	1983	Co-ordinates
County	Project	Co-ordinates
Northing		<u>185531.8004</u>
Easting		<u>508142.8432</u>
State Plane Co-ordinates		
Y		_____
X		_____
Date _____		

KNAPP WOODWORKING

Revised date	Revised date	Revised date
<u>7-20-81</u>		
<u>7-10-87</u>		
<u>8-18-98</u>		



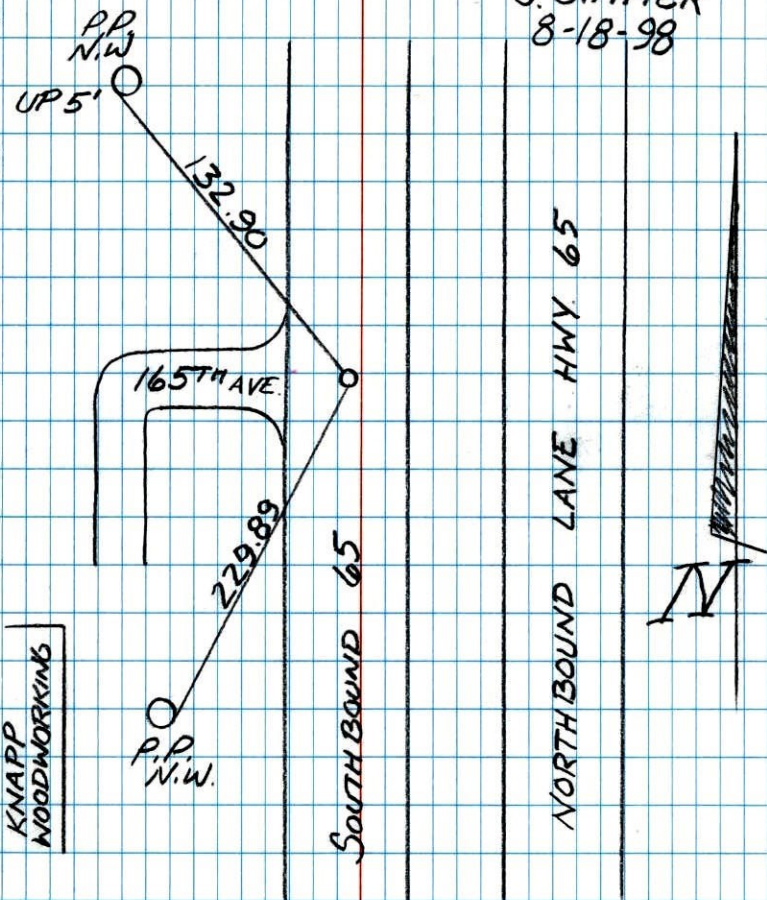


SOUTH QTR. SEC. 8 T. 32 R. 23

RETIED CAST IRON MON.

H. LARSON  
B. KLEMZ  
J. SIMMER  
8-18-98

NO. 446  
NATIONAL PRINTING



S 1/4 Cor. Sec. 8-32-23

Spike in E S. bound lane

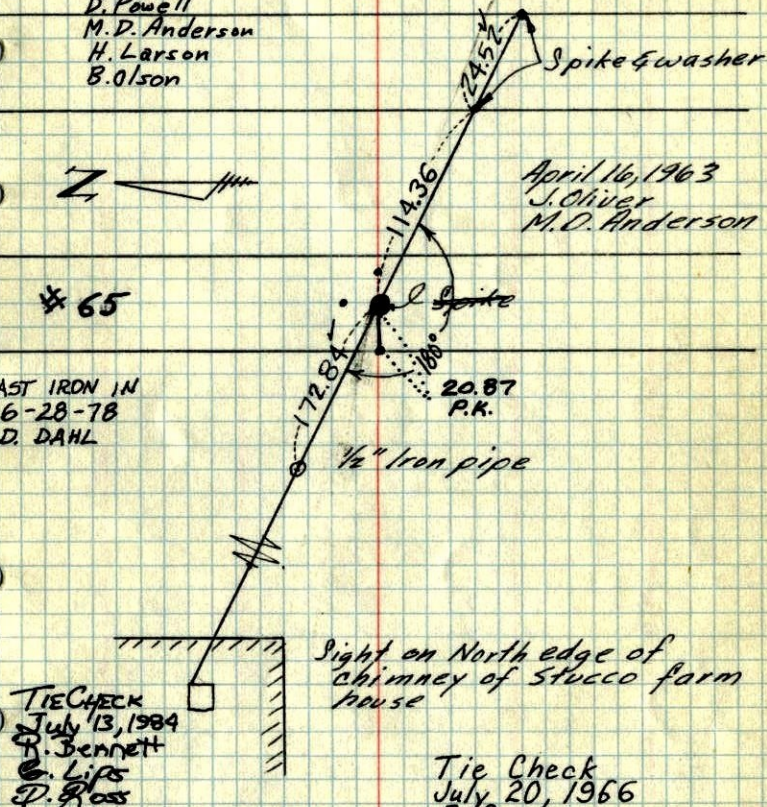
PK Spikes 2.00 North + East  
Set Cast Iron Monument flush in place of  
PK according to ties.

Sept. 9, 1969  
D. Powell  
M.D. Anderson  
H. Larson  
B. Olson



# 65

CAST IRON IN  
6-28-78  
D. DAHL



April 16, 1963  
J. Oliver  
M.D. Anderson

Sight on North edge of  
chimney of stucco farm  
house

TIE CHECK  
July 13, 1984  
D. Bennett  
S. Lips  
D. Ross

Tie Check  
July 20, 1966  
B. Rogers  
J. Berry  
R. Smith

TEMPERATURE CORRECTED  
AND HORIZONTALLY  
TAPED MEASUREMENTS

ROLAND W. ANDERSON  
COUNTY SURVEYOR  
ANOKA COUNTY, MINNESOTA

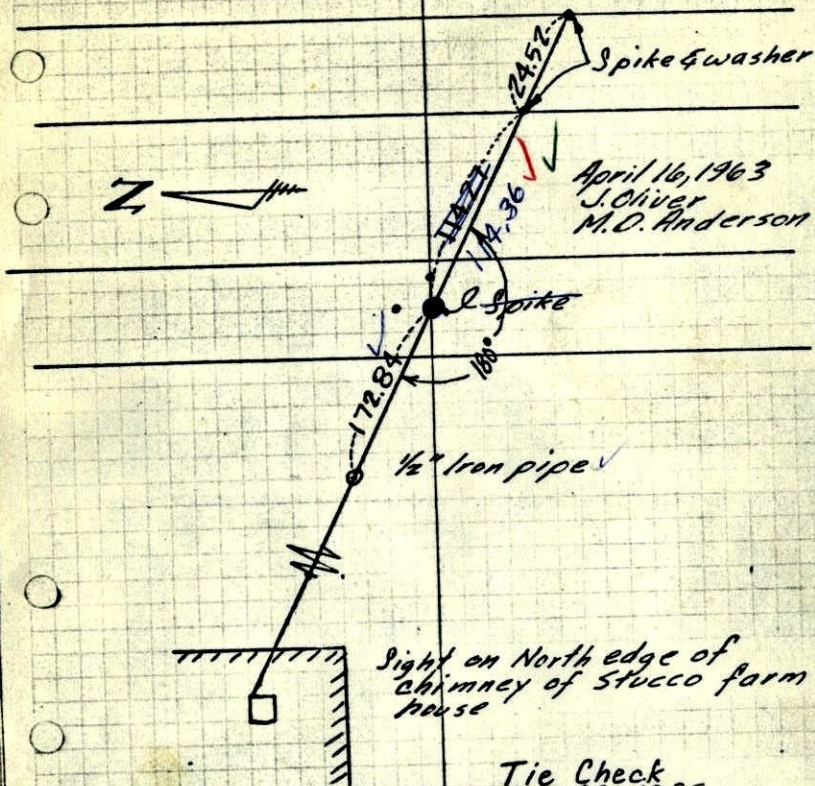


S 1/4 Cor. Sec. 8-32-23

Spike in E S. bound lane

PK Spikes 2.00' North + East

Set C.I. Mon. flush in place of PK.  
PK's 2.00' N + E



April 16, 1963  
J. Oliver  
M.D. Anderson

Sight on North edge of  
chimney of Stucco farm  
house

Tie Check  
July 20, 1966  
B. Rogers  
J. Berry  
R. Smith

TEMPERATURE CORRECTED  
AND HORIZONTALLY  
TAPED MEASUREMENTS

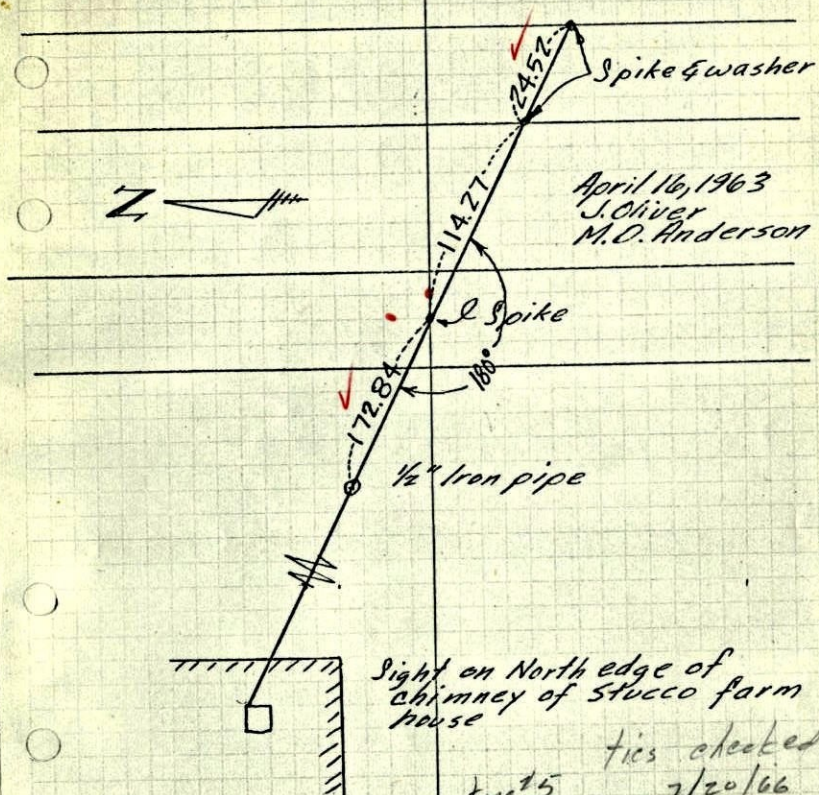
9/9/69  
#9-680  
D. Powell  
M.D. Anderson  
B. Olson  
H. Larson

ROLAND W. ANDERSON  
COUNTY SURVEYOR  
ANOKA COUNTY, MINNESOTA

S 1/4 Cor. Sec. 8-32-23

Spike in E S. bound lane

PK 2' North + East



April 16, 1963  
J. Oliver  
M.D. Anderson

Sight on North edge of  
chimney of Stucco farm  
house

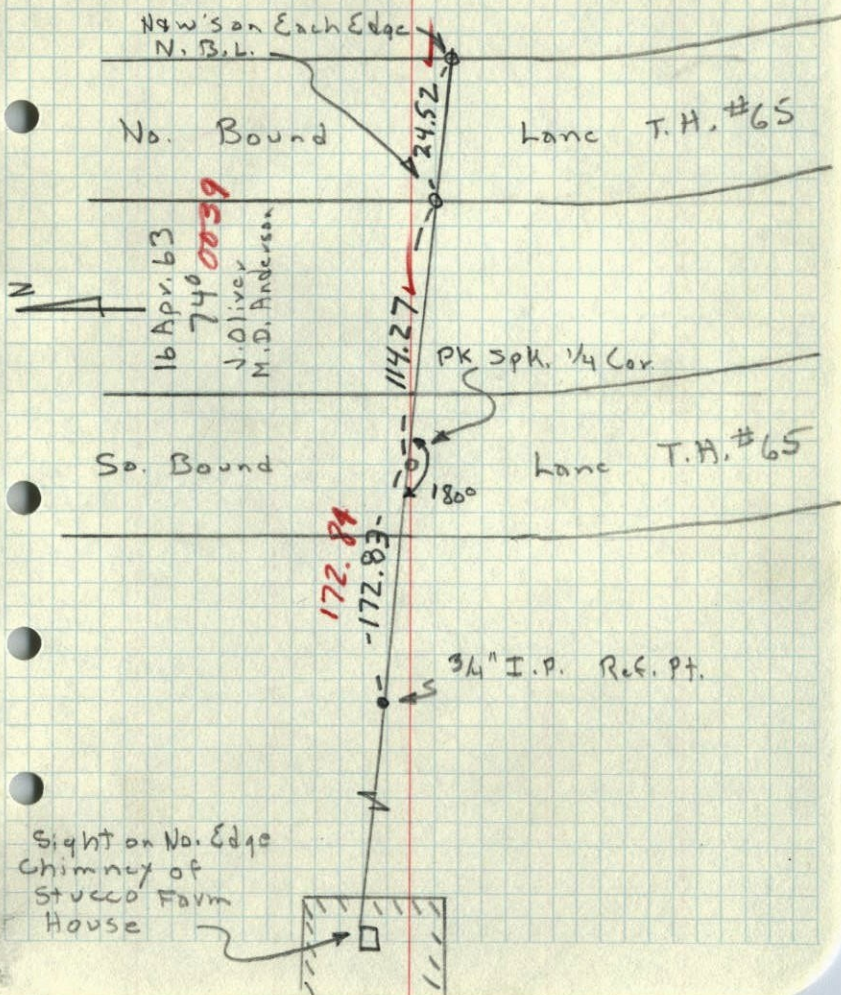
ties checked  
tape 15  
temp. 72°  
2/20/66  
B. Rogers  
J. Berry  
R.

TEMPERATURE CORRECTED  
AND HORIZONTALLY  
TAPED MEASUREMENTS

ROLAND W. ANDERSON  
COUNTY SURVEYOR  
ANOKA COUNTY, MINNESOTA

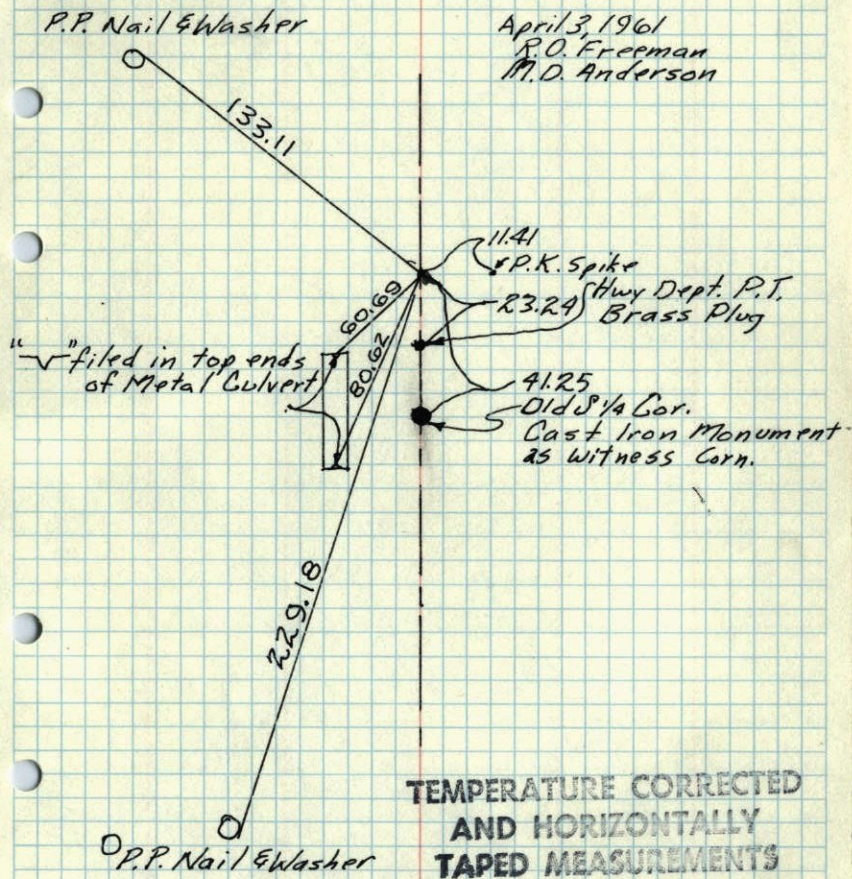


So. 1/4 Cor. Sec. 8, T32, R23  
 Retired Spk. because of road Const.



S 1/4 Cor. S-8, T-32, R-23

Set P.K. Spike from Gillis' Old Dist.  
 south from N 1/4 Cor.



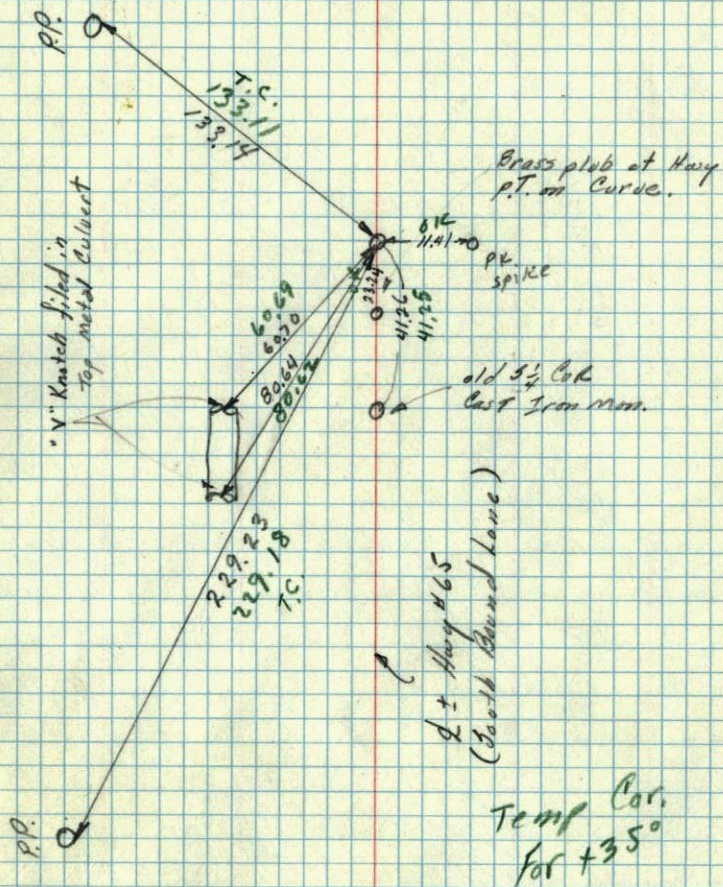
April 3, 1961  
 R.O. Freeman  
 M.D. Anderson

ROLAND W. ANDERSON  
 COUNTY SURVEYOR  
 ANOKA COUNTY, MINNESOTA



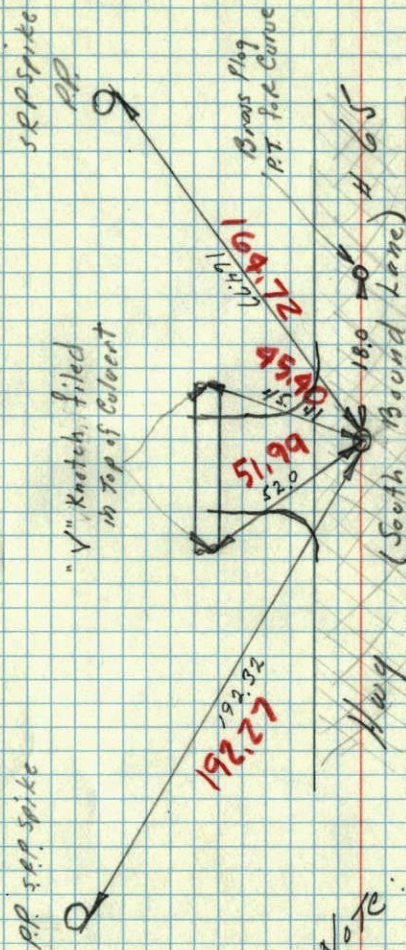
3 April 1961  
 Freeman Anderson  
 +35°

1/4 Cor Sec 8. 32-23. Ham Lake  
 Set pk spike from Gillis' old dist South  
 from N 1/4 Cor.



10 Jan 1961  
 Freeman Anderson  
 +25°

1/4 Cor Sec 8 32-23. (Ham Lake)  
 Found East Iron Mon. & Hwy #65

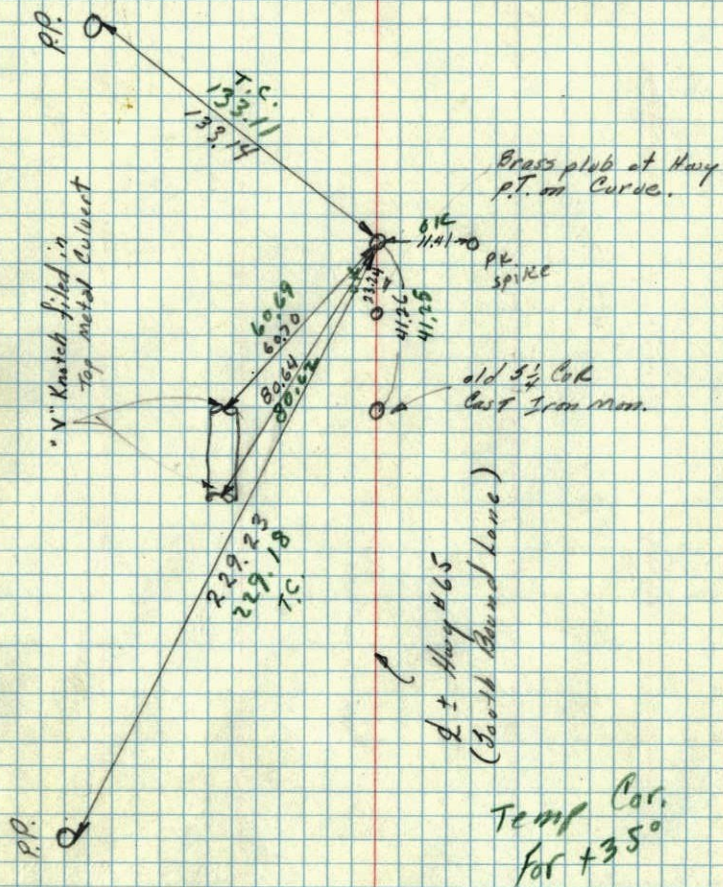


Note: This ~~Cor.~~ Subject ~~to be~~ charged



3 April 1961  
 Freeman Anderson  
 +35°

1/4 Cor Sec 8. 32-23. Ham Lake  
 Set pk spike from Gillis' old dist South  
 from N 1/4 Cor.



10 Jan 1961  
 Freeman Anderson  
 +25°

1/4 Cor Sec 8 32-23. (Ham Lake)  
 Found Cast Iron Mon. & Hwy #65

